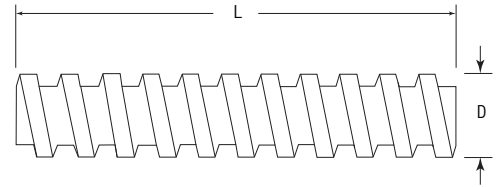




ACME All Thread Rod

Material: C12L14



Size	PLN	3'	6'	10'	12'
3/8 - 12	•	•			•
1/2 - 10	•	•			•
5/8 - 8	•	•			•
3/4 - 6	•	•			•
7/8 - 6	•	•			•
1 - 5	•	•			•
1-1/8 - 5	•	•			•
1-1/4 - 5	•	•			•
1-1/2 - 4	•	•			•